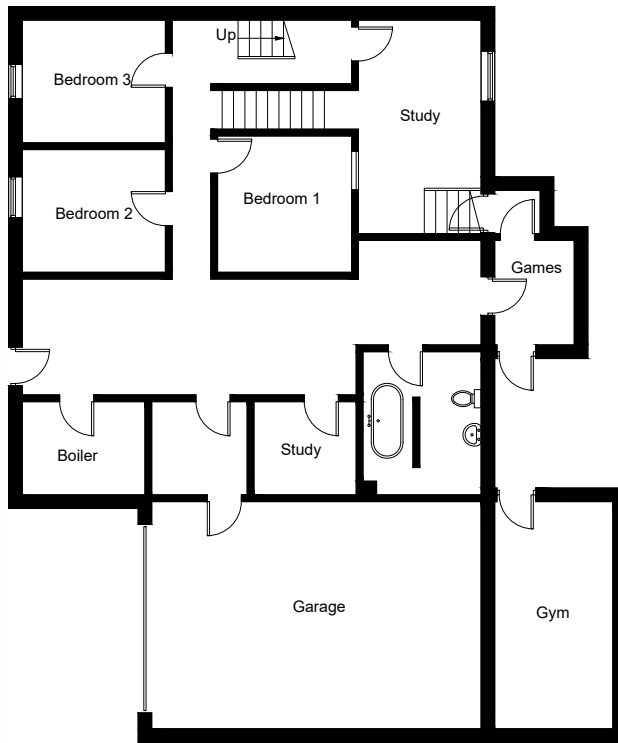


High Cragg Farm, Moor Road, Burley, LS29 7BG

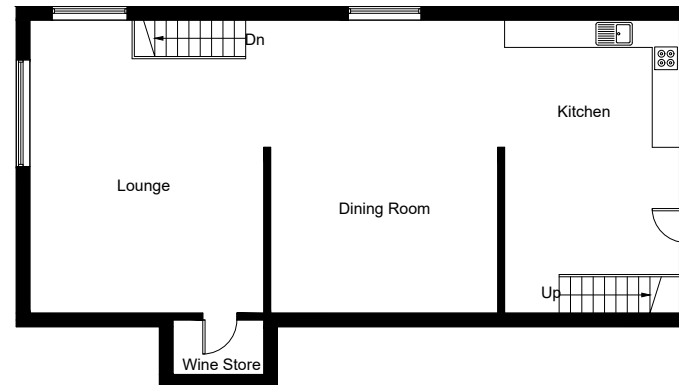
Approximate Gross Internal Area = 281.7 sq m / 3032 sq ft (Including Garage)

Outbuildings = 125.4 sq m / 1350 sq ft

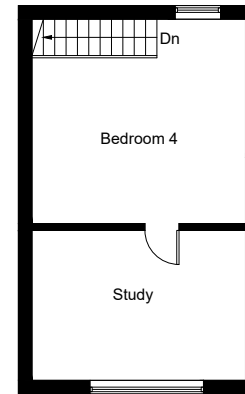
Total = 407.1 sq m / 4382 sq ft



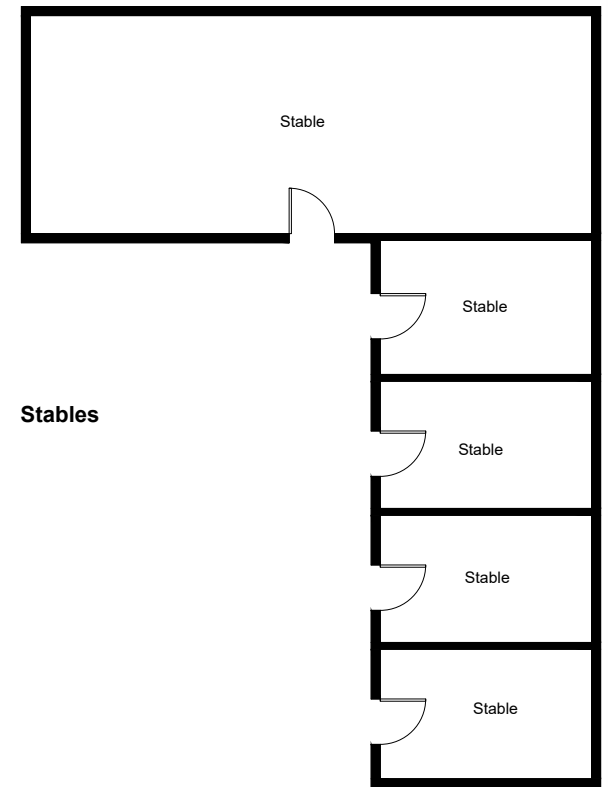
Ground Floor



First Floor



Top Floor



Stables

(Not Shown In Actual Location / Orientation)

Illustration for identification purposes only,
measurements are approximate, not to scale. (ID1144572)