



MOUNT PLEASANT
Cotherstone,



GSC GRAYS

PROPERTY • ESTATES • LAND

MOUNT PLEASANT

County Durham, DL12 9PF

Situated in the heart of Cotherstone is a striking Victorian family home requiring some refurbishment. Mount Pleasant oozes character with traditional high ceilings and benefits from a paddock (approx 0.2 acre) and outbuildings.

ACCOMMODATION

- * Detached Victoria family home
 - * Three bedrooms
 - * Two reception rooms
 - * Study/Office
 - * Conservatory
 - * Paddock and outbuildings
 - * Requiring some refurbishment



GSC GRAYS

PROPERTY • ESTATES • LAND

12 The Bank, Barnard Castle, Co. Durham, DL12 8PQ

01833 637000

barnardcastle@gscgrays.co.uk

GSCGRAYS.CO.UK



Situation & Amenities

Ideally situated for easy access to the local towns of Barnard Castle, Darlington and Richmond, whilst the cities of Newcastle, Durham, York and Leeds are within easy reach. Main line train stations can be found at Darlington and Durham, with International Airports at Newcastle and Leeds Bradford. The A66 and A1(M) are easily accessible bringing many areas within commuting distance. Cotherstone benefits from two public houses, a café/shop plus a popular Primary School. State secondary school with sixth form, public school and prep school at Barnard Castle





Accommodation

Ground Floor

The property benefits from separate dining and living rooms with traditional gas fires, both including views over the village. The kitchen incorporates many desirable features including freestanding island with 1 1/2 sink and Rayburn gas stove with stone overmantel. There is also an integrated dishwasher and fridge/freezer, pantry storage and wall and base units. A west facing sun room with external doors to the rear garden provides additional space. The ground floor also benefits from a study with fitted cupboards, cellar plus utility space with WC, plumbing for white goods.

First Floor

On the first floor there is a spacious master bedroom with en-suite bathroom incorporating a freestanding shower, WC and pedestal sink. There are two further bedrooms, one overlooking the front aspect and one overlooking the rear.



Externally

To the rear of the property there is a large walled garden that has been mainly laid to lawn with planted borders and stone feature. To the side of the sunroom is a patio courtyard with door leading to the garage. Beyond the gardens is a small paddock with stone built outbuildings, which could provide a development opportunity subject to the necessary planning consents. The front aspect includes further walled garden and tiered patio.

Garage & Parking

The property benefits from an elongated driveway with ample space for vehicles. There is a generously sized attached single garage with power and electric up and over door.

Tenure

The property is believed to be offered freehold with vacant possession on completion.

Local Authority and Council Tax Band

Durham County Council Tel: 03000 26 00 00.

For Council Tax purposes the property is banded E.

Particulars

Particulars written in March 2025.

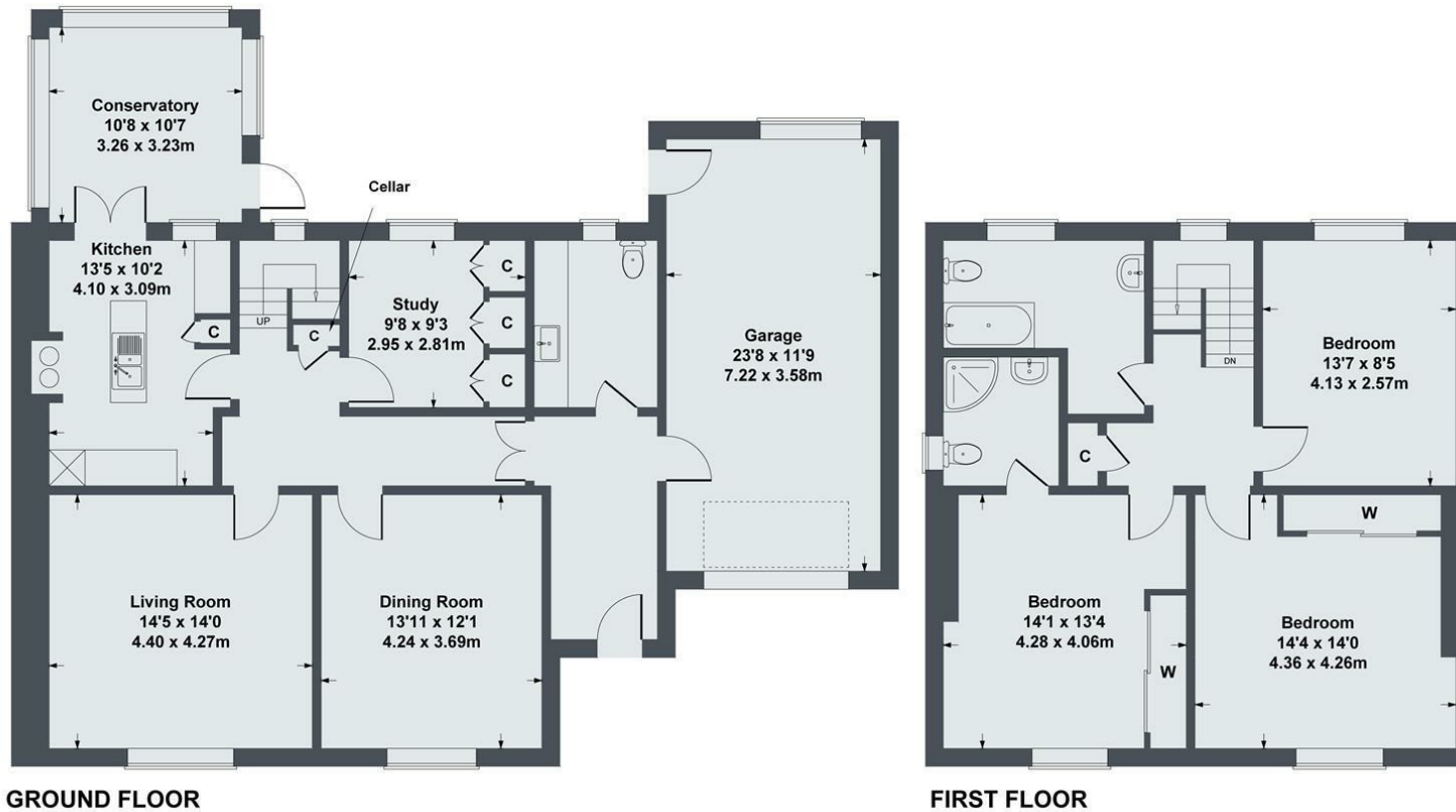
Photographs taken in March 2025.

Services and Other Information

Mains electricity, gas and drainage, and water are connected. Gas fired central heating.

Mount Pleasant, Cotherstone

Approximate Gross Internal Area
2088 sq ft - 194 sq m



SKETCH PLAN FOR ILLUSTRATIVE PURPOSES ONLY

All measurements walls, doors, windows, fittings and appliances, their sizes and locations, are approximate only. They cannot be regarded as being a representation by the seller, nor their agent.

Produced by Potterplans Ltd. 2025

Energy Efficiency Rating		
	Current	Potential
Very energy efficient - lower running costs		
(92 plus) A		
(81-91) B		80
(69-80) C		
(55-68) D	51	
(39-54) E		
(21-38) F		
(1-20) G		
Not energy efficient - higher running costs		
England & Wales	EU Directive 2002/91/EC	



DISCLAIMER NOTICE:

PLEASE READ: GSC Grays gives notice to anyone who may read these particulars as follows:

1. These particulars, including any plan are a general guide only and do not form any part of any offer or contract.
2. All descriptions including photographs, dimensions and other details are given in good faith but do not amount to a representation or warranty. They should not be relied upon as statements of fact and anyone interested must satisfy themselves as to their corrections by inspection or otherwise.
3. Neither GSC Grays nor the vendor accept responsibility for any error that these particulars may contain however caused.
4. Any plan is for layout guidance only and is not drawn to scale. All dimensions, shapes and compass bearings are approximate and you should not rely upon them without checking them first.
5. Nothing in these particulars shall be deemed to be a statement that the property is in good condition / repair or otherwise, nor that any services or facilities are in good working order.
6. Please discuss with us any aspects that are important to you prior to travelling to the view the property.